

PREMIERBC

Premier Business Coaching

Premier Business Coaching Ltd.

Leadership and Corporate Business Coach

www.premierbc.co.uk

rezan@premierbc.co.uk

+44 7522 779707

Who are we?

- We have been running the coaching business for 23 years in Istanbul, Turkey. Currently we are providing our services in London.
- Premier Business Coaching Ltd. has worked with various leaders in the corporate, sports and tourism industry.
- Our vision is to bring coaching and psychology field together and create a long lasting change.
- With the help of coaching techniques, we are here to indicate the areas that needs to be improved, create an action plan and work towards it.

Who are we?

- To create the long lasting change, we also provide individual psychotherapy sessions
- We strongly believe that if an individual is content with their personal life and learn how to manage their emotions, they will be able to overcome any obstacle, leading them to achieve success in any area of their life.
- We also provide stress management training and bring awareness to the individuals to enhance their performance and motivation.

Rezzan Özdemir CEO, Founder of Premier Business Coaching Ltd.

ABOUT US



NLP Master & Executive Corporate Business Coach

- ***Richmond College Management (BBA)***
- ***The Coaching Academy of London***
- ***NLP (Neuro-linguistic Programming) Paul Mckenna***
- ***Anthony Robbins Unleash The Power Within***

What are our beliefs?

- 'I can do it if I want to.'
- 'I can take responsibility for myself.'
- 'I have the courage to do that.'
- 'I design my life the way I want it.'
- 'I believe in myself.'
- 'Time for action!'

What is our aim?

- Proceeding the work flow with effective but shorter working hours with the employees who have “ higher performance”.
- To create and promote agenda to prevent “negative thoughts” in the work place.
- Promoting self-regulatory tools to the employees to operate the “Executive Dependant” business process.

What is our aim?

- Increasing the individual and corporate performance by maintaining the affirmative performance.
- Increasing the departments efficiency and maximising the customer satisfaction.
- Training and assessment for the top executives and middle level managers so that they can eventually become a coach and manage the corporate team more efficiently.
- We aim to change the way you talk with your true self and how you communicate with others by teaching you the neurolinguistic language.

What do we value?

- We love people.
- We are aware that information and technology are the right source for today's world.
- Honesty, sincerity and open communication are indispensable for us.
- We know that change is only possible with the perception and mind power of individuals.
- We are aware of our beliefs, perception of leadership and the resources we have.
- We cultivate the seeds of the developed and enlightened society by believing in the minds, hearts, and labour of the wives and children.
- We know that the true leadership is to believe in person.
- We have 20 years of experience and knowledge in the sector.

What is coaching?

- Coaching enables the changes in individuals' life by using the existing internal resources maximum with their own free will and decisions.
- With the coaching programs, we help people to procure acceptance of themselves first. And also we help them to make dedicated decisions and implement these decisions by regulating their needs and priorities.

How does coaching help you to achieve this?

- Helping to raise the awareness of a client with powerful questioning techniques so they can get clear on what they truly desire and who they are at their core
- Assisting them to create practical, step-by-step action plans to reach their goals
- Providing on-going support through any changes or obstacles a client may encounter
- Providing a client with tools, techniques and strategies to create lasting change and success

What techniques do we use?

- T-Grow Coaching Techniques Management
- Coaching Skills Individual Performance
- (Career) Coaching Team Coaching
- Mentoring



T GROW MODEL

What
techniques do
we use?



Goals

What do you want to achieve?

Reality

What is happening now?

Options

What could you do?

Will

What will you do?

What techniques do we use?

T-GROW MODEL (Whitmore et al.,1980)

T - Topic

Clarification and exploration of the topic

G- Goal

Setting of specific goals – long/medium/short term and for the session itself

R- Reality

Understanding where the coachee is now in relation to their goals?

O- Option

Exploring options to move forward

W- Will

Identifying and agreeing to take the specific action

What services do we deliver?



**Corporate
Coaching**



**Individual
Coaching**



**Sports and
Mind
Coaching**

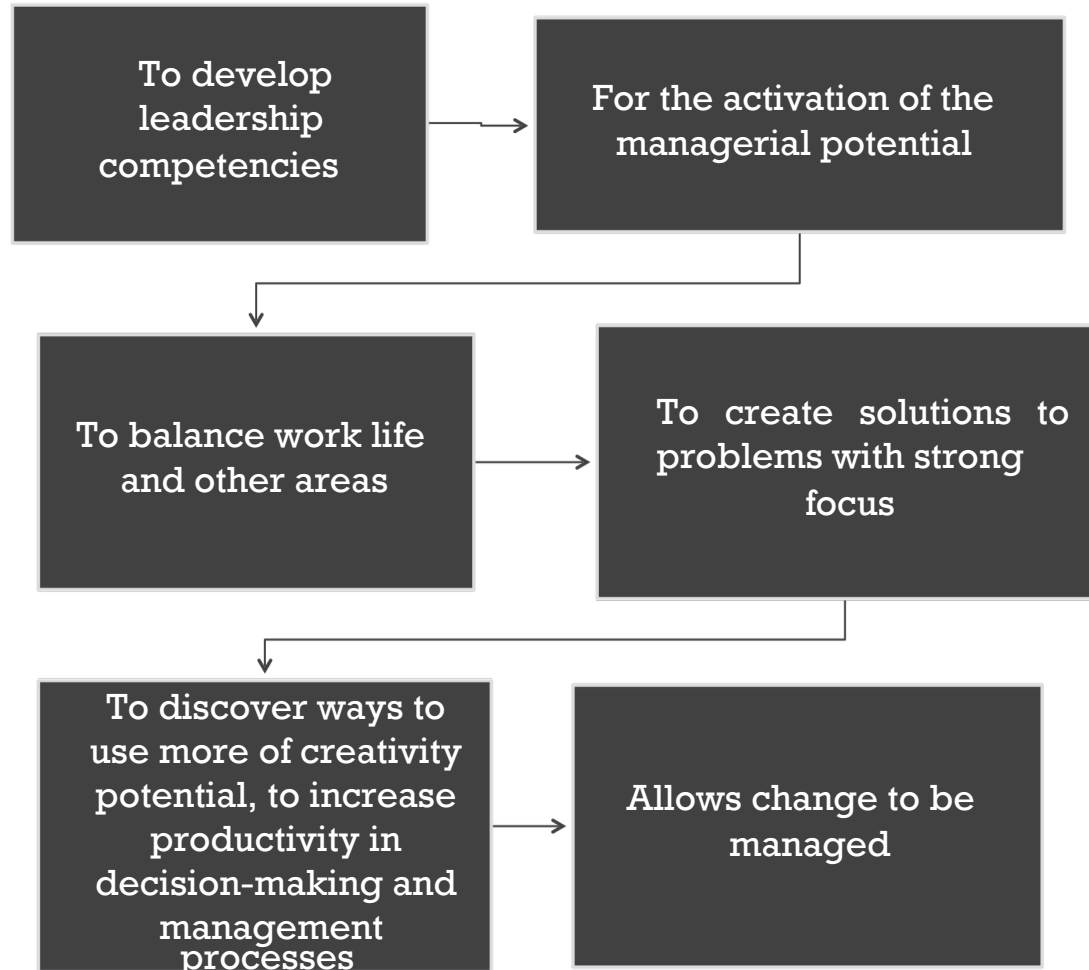


**Coaching in
Tourism**

Personal Performance Coaching

- To learn dynamically applicable techniques to increase the performance awareness of the person
- The discovery of the person's own developed and developmental aspects, the mapping of the roadmap for recognizing and developing the competencies needed for their objectives
- To clarify the purpose of life, its goals and the performance criteria necessary to achieve those goals
- To develop problem-solving skills
- The discovery and removal of its limitations and negatives,
- To change the point of view of processes and to find ways to manage more effectively
- With the internalization of the process, the development of performance into a lifestyle that can be used in other areas of life
- Achievement of return habits and failure to achieve success habits

Executive Leadership Coaching



What is essential for a successful corporate environment?

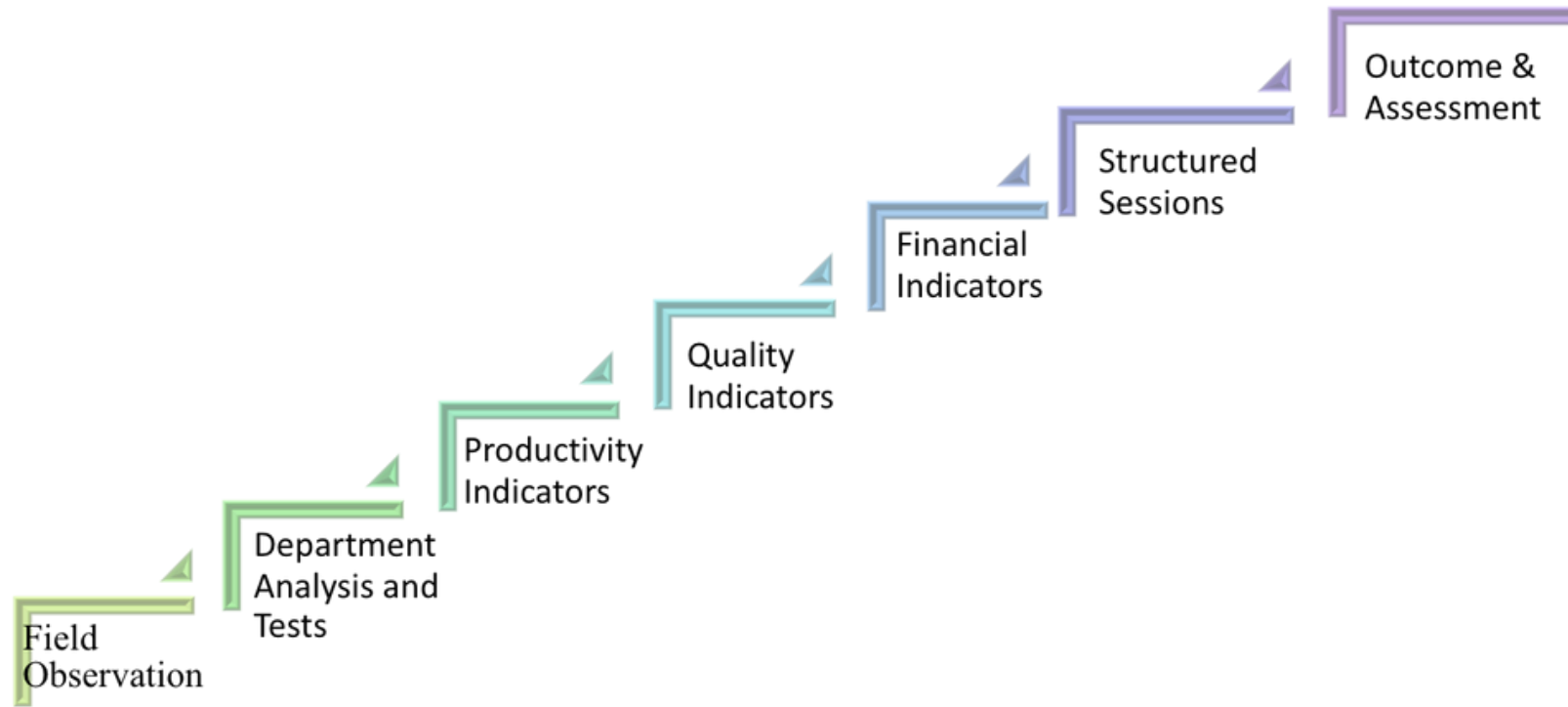
- Finding institutional awareness and culture
- Employee satisfaction and loyalty
- Customer satisfaction and continuity
- Identify business goals and patterns of behaviour on the road to those targets
- All employees, regardless of position, can understand the vision of the institution, collect it under one purpose, and keep pace with change
 - Leadership competencies in the management
 - Placement of appropriate processes and behavioural changes
 - The most efficient use of the working potential
 - Retention of talented leaders and efficient employees
 - Effective internal communication
 - Motivation
- To increase internal productivity and profits
- To comply with the current market and market conditions.

How can you benefit from us?

- Gain clarity in your purpose
- Become a more effective leader
- Achieve your goals Improve your relationships

Training Plan

- Communication
- Language Management
- Corporate Values
- Corporate Beliefs
- Action Plan
- Management and Coaching
- Skills Workshop
- T-Grow Corporate Coaching



Identifying needs and Pre-assessment

Training Benefits

- To be able to use the management, leadership and coaching skills with the fundamental coaching techniques
- Awareness of the strengths and weaknesses in management and acknowledging the present management style
- Gaining awareness about how to approach junior staff and management of the employees
- Business performance and motivation will be prominently increased
- Due to a more professional process, you will be able to effectively choose the behaviour model regarding stress management, anger management that will lead you to success.
- Learning to effectively listen and in return being listened actively

Training Benefits

- To be able to make strategic decisions in more comfortable and outcome oriented approach
- To be able to manage your team with better enthusiasm, motivation.
- Not having enough time and being overcrowded with work will be excluded from your concerns.
- To be able to start working on subjects that will make you a better version of yourself.
- Planning your career more efficiently for the long term
- Being aware of your worries and stress-triggers and to be able to switch them into a beneficial outcome.

Schedule	Content*	Attendants	Total Time
... Monthly	<ul style="list-style-type: none"> Increasing Individual Performance Setting Goals Decision Making Communication Creating Outcome Management Ability 	1	Monthly ...daily Individual sessions as individual performance coaching
		2	
		3	
		4	
		5	
		6	
		7	
		8	
		...	

*Notes:
Individual needs analysis will be identified later.

Individual Coaching Programme

Schedule	Content*		Total Time
... Monthly	T-Grow Technique Corporate Value Corporate Belief Systems Action Plan Corporate Language Management NLP CRM Communication Motivation Performance Management Management Skills Individual and Corporate Brand and Reputation Management		Monthly ... days

*Notes:

Participation per class is limited with 25 people.

Training in morning sessions and workshops in the midday sessions

Corporate Performance Coaching Programme

What our client's say about us

“ Rezan Ozdemir has a very successful and widely accepted leadership and a business coach who counts a larger number of major Turkish corporations amongst her clients. I first encountered Rezzan when I was the CEO of General Energy, the FTSE listed Anglo-Turkish oil and gas company. I would have no hesitation in giving her an unqualified recommendation and would also not hesitate to use her in my ongoing business activities.”

Tony Hayward

Chairman-GLENCORE plc.



What our client's say about us

- “ Ms Rezzan made us to confront with ourselves in order to take the right steps in our business and she strengthened our perception of the team spirit by identifying the true individualistic needs and workflow of the company”

Ahmet Nur Cebi

President Kaptan Demir Celik/ Chairman of
Besiktas Sports Club



References

- Beşiktaş Sports Club
- Kaptan Demir Çelik Group (Steel Company)
- Bayraktar Holding (Automotive Industry)
- Nuh Çimento (Nuh Yapı Ltd. Şti.)
(Construction Material Export)
- ICF Airport Antalya
- IC Holding
- Koç Holding (Divan Hotels)
- Toyota SA
- Sefa Merve
- İnoksan A.Ş. (Industrial Kitchen Equipment)
- Teknik Balans A.Ş.
- Rixos Hotels
- Dimer Group
- Sembol A.Ş.
- Hillside Hotels

References

- Voyage Hotels
- Dorak Holding
- Letonya Group
- Titanic Hotels
- Perge Group
- Kircilar Mondial
- Baia Hotels
- Tam Sofra A.Ş.

References

- İstanbul Provincial Security Directorate
- Antalya Provincial Security Directorate
- Turkish Association of Municipalities
- Akdeniz Union of Municipalities
- Çukurova Union of Municipalities
- Karadeniz Union of Municipalities
- Bursa Osmangazi Municipality
- Akdeniz University
- Antalya Businessmen Association
- Member of the Turkish Parliament Sadık Badak
- Congressman Yıldırım Sapan
- Antalya Metropolitan Municipality Mayor Menderes Türel
- Konyaaltı Mayor Muhittin Böcek
- Former Bar President İlhami Kaplan
- Mersin Mayor Burhanettin Kocamaz
- Turkish Association of Municipalities General Secretary Hayrettin Güngör
- Turkish Association of Municipalities Deputy Secretary General Cevdet Sökmen
- Antalya Provincial Security Directorate

References

- İbrahim Çeçen (IC Holding Chairman of the Executive Board)
- Murat Çeçen (IC Holding Member of Board)
- Serhat Çeçen (IC Holding Member of Board)
- Vehbi Varlık (İnoksan A.Ş. Chairman of the Executive Board)
- Emre Varlık (İnoksan A.Ş. Member of Board)
- Fettah Tamince (Rixos Group Chairman of the Board)
- Cem Osman Sokullu (General Director)
- Halim Tekeşin (General Director)
- Bora Konuk (Teknik Balans A.Ş. Chairman of the Board)
- Ajlan Haskök (Teknik Balans A.Ş. Member of the Board)
- Ali Zengin (General Director)
- Mehmet Biçer (General Director)
- Ersun Yanal (Technical Director/Coach)
- Tamer Tuna (Deputy of Coach)
- Savcı Suat Şahintürk
- Dr. Cüneyt Ataseven